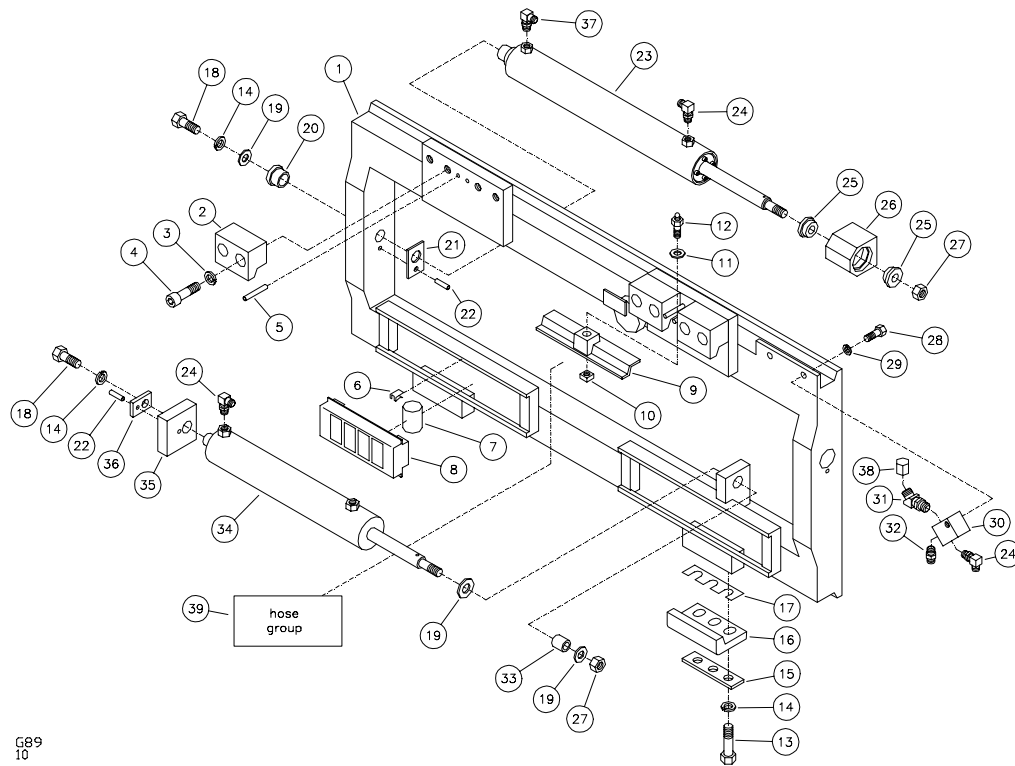


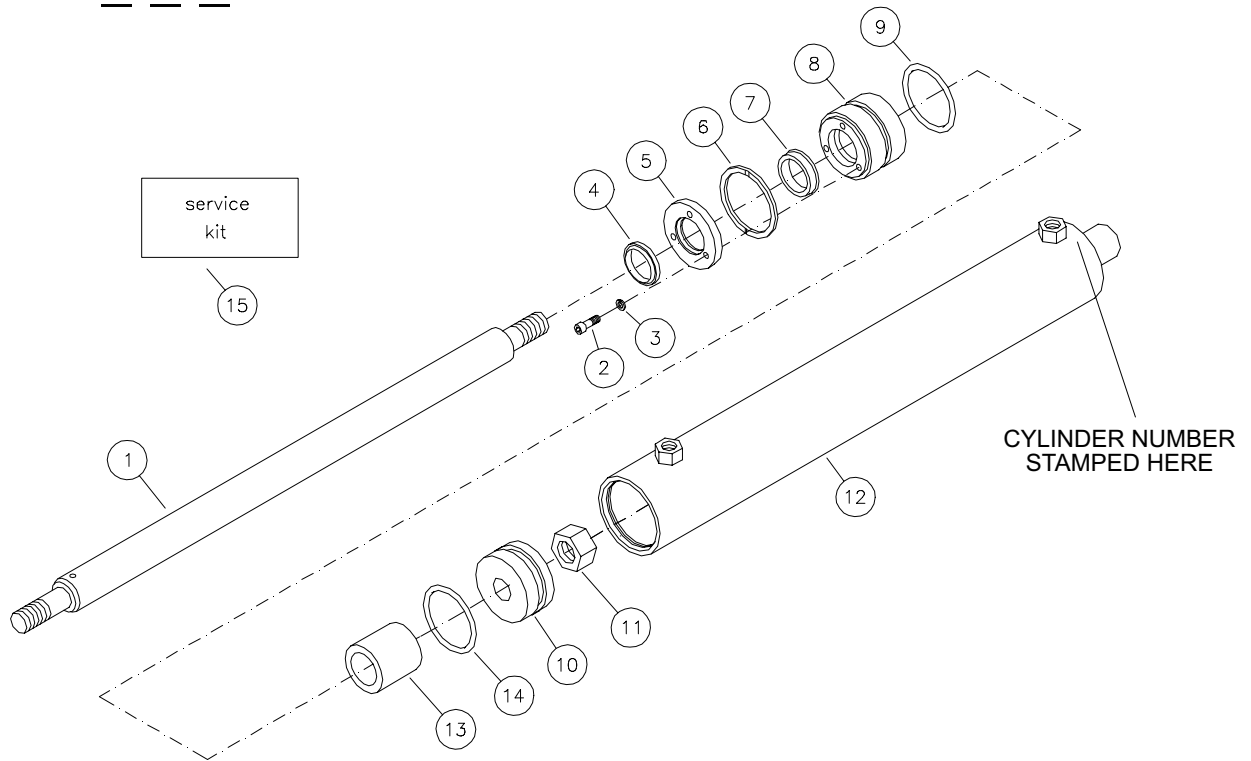
CLASS II SIDE SHIFTING FORK POSITIONER FOR MODELS BEGINNING E5C, E4C, E3C



ITEM	REQ'D	PART #	DESCRIPTION	ITEM	REQ'D	PART #	DESCRIPTION
1.	1	204-008*	FORK POSITIONER	21.	2	004-004	PLATE
2.	4	006-005	HOOK	22.	3	401-016-001	ROLL PIN
3.	8	402-017-001	LOCK WASHER	23.	2	C-1A*	CYLINDER
4.	8	403-028-001	SOCKET HEAD SCREW CAP	24.	6	120-051-003	FITTING
5.	4	401-016-002	ROLL PIN	25.	4	046-001	BUSHING
6.	2	417-001	SPRING CLIP	26.	2	101-007	CYLINDER ANCHOR
7.	8	047-004	ROLLERS HEAT TREATED	27.	3	406-023-001	NUT
8.	2	003-009	ROLLER CAGE	28.	2	405-072-001	CAP SCREW
9.	2	005-203	ITA SLIDE/RETAINER	29.	2	402-016-004	LOCK WASHER
10.	2	406-004-001	NUT	30.	2	119-005-001	MANIFOLD
11.	2	404-002-001	FLAT WASHER	31.	2	120-064-001	FITTING
12.	2	408-001	GREASE FITTING	32.	2	120-050-004	FITTING
13.	6	405-067-003	CAP SCREW	33.	1	046-003	BUSHING
14.	9	402-016-003	LOCK WASHER	34.	1	C-322	CYLINDER
15.	2	004-216	PLATE	35.	1	101-153-001	CYLINDER ANCHOR
16.	2	005-202	ITA SLIDE/RETAINER	36.	1	004-009	PLATE
17.	6	041-001	SHIM	37.	2	120-070-001	FITTING
18.	3	405-067-005	CAP SCREW	38.	2	120-059-001	FITTING
19.	4	404-009-001	FLAT WASHER	39.	1	127-069*	HYDRAULIC HOSE GROUP
20.	2	046-002	BUSHING				

* Specify fork positioner model or serial number when ordering.

CYLINDER

C-1A _ _ _

ITEM	REQ'D	PART #	DESCRIPTION
1.	1	104-001*	CYLINDER ROD
2.	3	403-034-001	SOCKET HEAD CAP SCREW
3.	3	402-016-007	LOCK WASHER
4.	1	124-007-003	ROD WIPER
5.	1	107-001-001	CYLINDER RETAINER
6.	1	410-017-004	RETAINING RING
7.	1	123-009-003	ROD SEAL
8.	1	106-001-001	CYLINDER HEAD
9.	1	121-024-010	O-RING
10.	1	105-001-001	CYLINDER PISTON
11.	1	406-023-001	NUT
12.	1	108-006*	TUBE ASSEMBLY
13.	1	050-001*	SPACER
14.	1	121-023-004	O-RING
15.	0	900-002-005	SERVICE KIT

SERVICE KIT NUMBER 900-002-005 INCLUDES

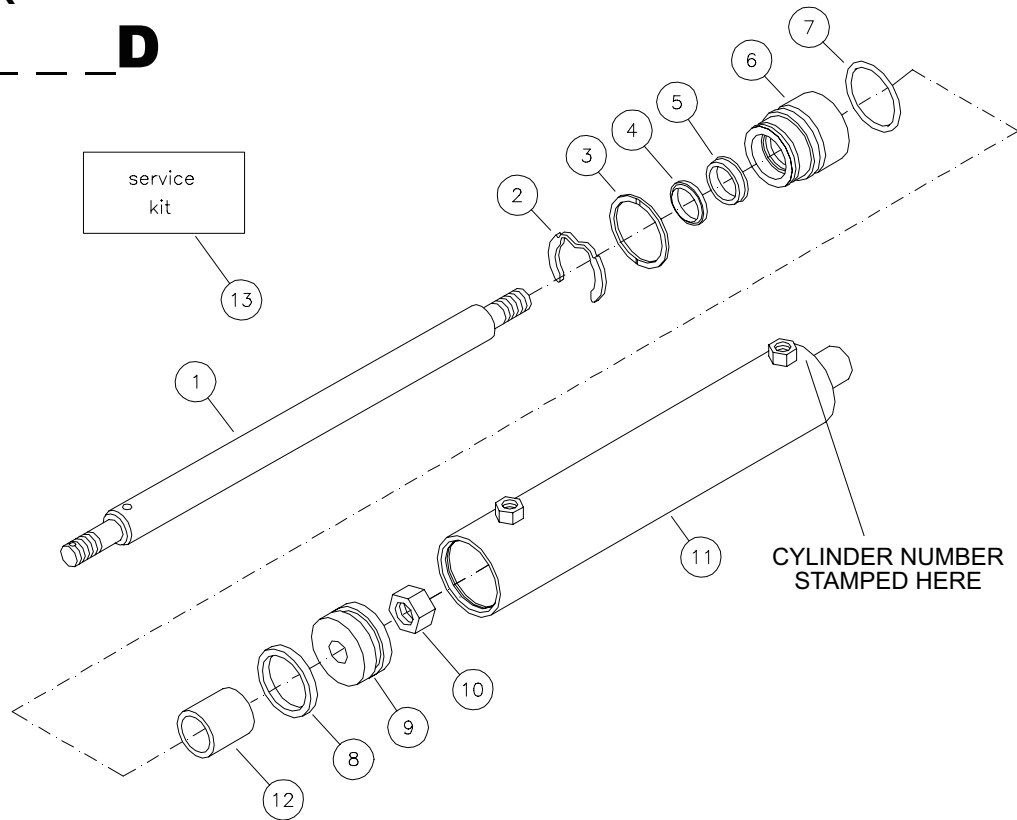
1	124-007-003	ROD WIPER
1	123-009-003	ROD SEAL
1	121-023-004	O-RING
3	403-034-001	SOCKET HEAD CAP SCREW
3	402-016-007	LOCK WASHER
1	410-017-004	RETAINING RING
1	121-024-010	O-RING

* Specify cylinder number, attachment model number, or attachment serial number when ordering.

- All seals are included in service kit. Seals are not sold individually.

CYLINDER

C-1A__ _D

G588
7

ITEM	REQ'D	PART #	DESCRIPTION
1.	1	104-001*	CYLINDER ROD
2.	1	410-022-003	RETAINING RING
3.	1	410-017-004	RETAINING RING
4.	1	124-007-003	ROD WIPER
5.	1	123-009-003	ROD/PISTON SEAL
6.	1	106-021-001	CYLINDER HEAD
7.	1	121-024-010	O-RING
8.	1	121-023-004	O-RING
9.	1	105-001-001	CYLINDER PISTON
10.	1	406-023-001	NUT
11.	1	108-006*	TUBE ASSEMBLY
12.	1	050-001*	SPACER/TUBE
13.	0	900-014-002	SERVICE KIT

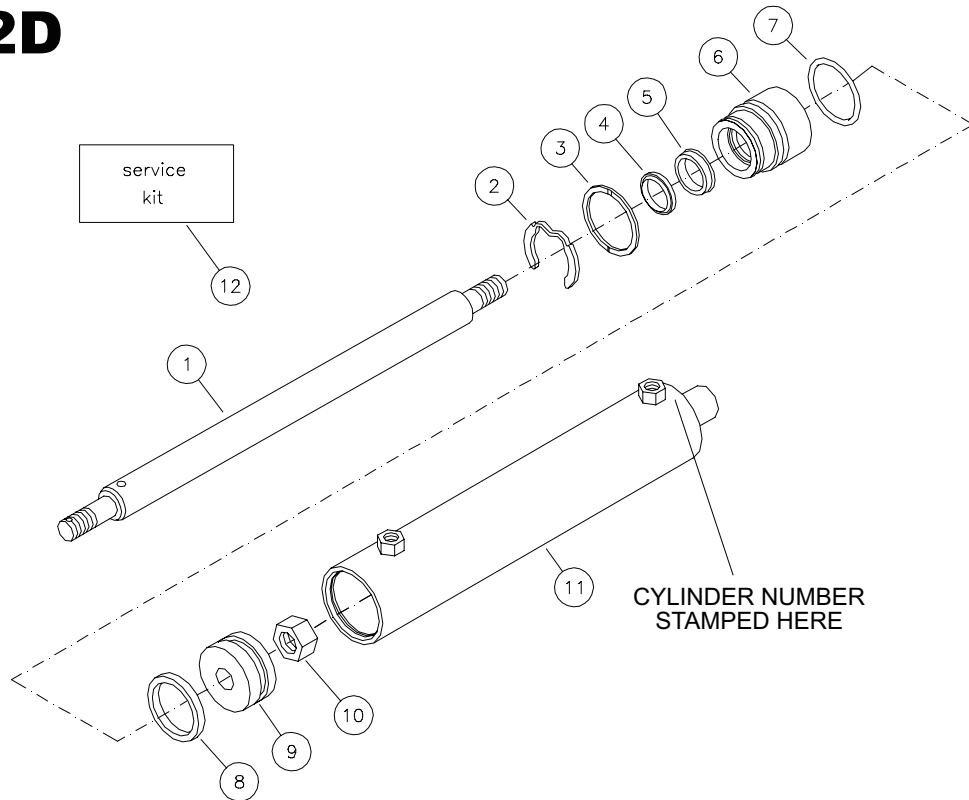
SERVICE KIT NUMBER 900-014-002 INCLUDES

1	124-007-003	ROD WIPER
1	123-009-003	ROD/PISTON SEAL
1	121-024-010	O-RING
1	410-022-003	RETAINING RING
1	121-023-004	O-RING
1	410-017-004	RETAINING RING

* Specify cylinder number, attachment model number, or attachment serial number when ordering.

- All seals are included in service kit. Seals are not sold individually.

CYLINDER C-322D

G537
7

ITEM	REQ'D	PART #	DESCRIPTION
1.	1	104-023-001	CYLINDER ROD
2.	1	410-022-003	RETAINING RING
3.	1	410-017-004	RETAINING RING
4.	1	124-007-003	ROD WIPER
5.	1	123-009-003	ROD/PISTON SEAL
6.	1	106-021-001	CYLINDER HEAD
7.	1	121-024-010	O-RING
8.	1	121-023-004	O-RING
9.	1	105-001-001	CYLINDER PISTON
10.	1	406-023-001	NUT
11.	1	108-006-008	TUBE ASSEMBLY
12.	0	900-014-002	SERVICE KIT

SERVICE KIT NUMBER 900-014-002 INCLUDES

1	124-007-003	ROD WIPER
1	123-009-003	ROD/PISTON SEAL
1	121-024-010	O-RING
1	410-022-003	RETAINING RING
1	121-023-004	O-RING
1	410-017-004	RETAINING RING

- All seals are included in service kit. Seals are not sold individually.

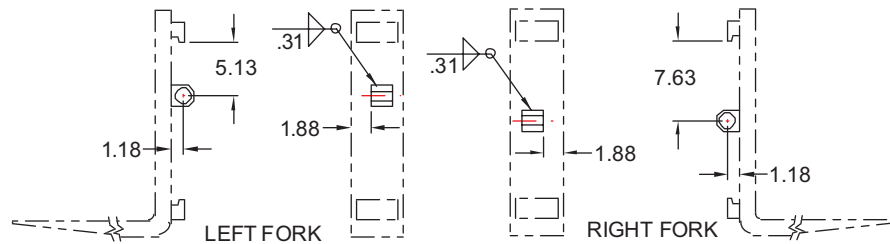
INSTALLATION INSTRUCTIONS FOR ITA CLASS II FORK POSITIONERS

These Instructions cover both side shifting and non-side shifting ITA class II D and E Series models. Fork installation information is included for units without factory supplied forks. Welding is required to install forks and to mount side shifting units.

Please read the instructions completely before you begin. Keep hands and feet free from dangerous positions or pinch points while working. Wear eye protection and appropriate clothing. Use the correct tools. Work in a clean, well lighted area taking care not to contaminate the hydraulic system as serious damage could result. Protect cylinder rods and other critical surfaces from weld spatter or accidental damage.

Installing the Forks *(Skip this procedure if your unit has factory installed forks.)*

1. Remove the fork anchors fastened to the fork positioning cylinder rods.
2. Weld one of the anchors to each fork shank as shown below. Make sure the anchor is level. Forks are made with various alloys. Contact the fork manufacturer for the recommended welding procedure.
3. Loosen the nut on each fork positioning cylinder base enough to push the cylinders back and allow the forks to be loaded through the center notch. Note: left and right are as viewed from the truck seat.



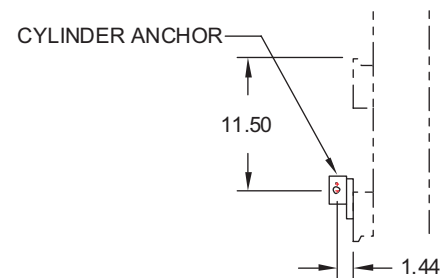
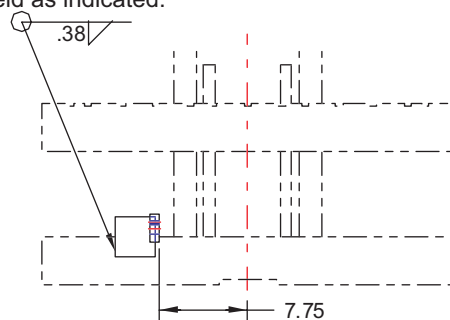
NOTE!

Front mounted backrests require the 1.88 dimension to be reduced by width of mounting flange. Forks may hit when fully retracted.

4. Insert the rod end of the fork positioning cylinder into the appropriate fork anchor, check for proper alignment then tighten the nuts on both ends of the cylinder.

Installing the Side Shift Cylinder Anchor *(Skip this procedure if your unit is non-side shifting.)*

1. Remove the side shift cylinder anchor from the side shift cylinder.
2. Carefully measure the truck carriage face as shown below and mark the cylinder anchor position.
3. Position the cylinder anchor as illustrated and tack weld. Insure that the anchor is perpendicular to the face of the truck carriage. Carriages are made with various alloys. Contact the truck manufacturer for the recommended welding procedure. Finish weld as indicated.



Mounting the Attachment

1. Remove the lower retainers.
2. Hang the Fork Positioner on the truck carriage, install the side shift cylinder and reinstall the retainers using shims as required.

If you have any questions or comments call (503)-556-1761 for technical assistance. Thank you for using Rightline products.



Rightline Equipment, Inc.
PO Box 130, Rainier, OR 97048
800-547-6300 | fax 503-556-2421
www.rightline.com