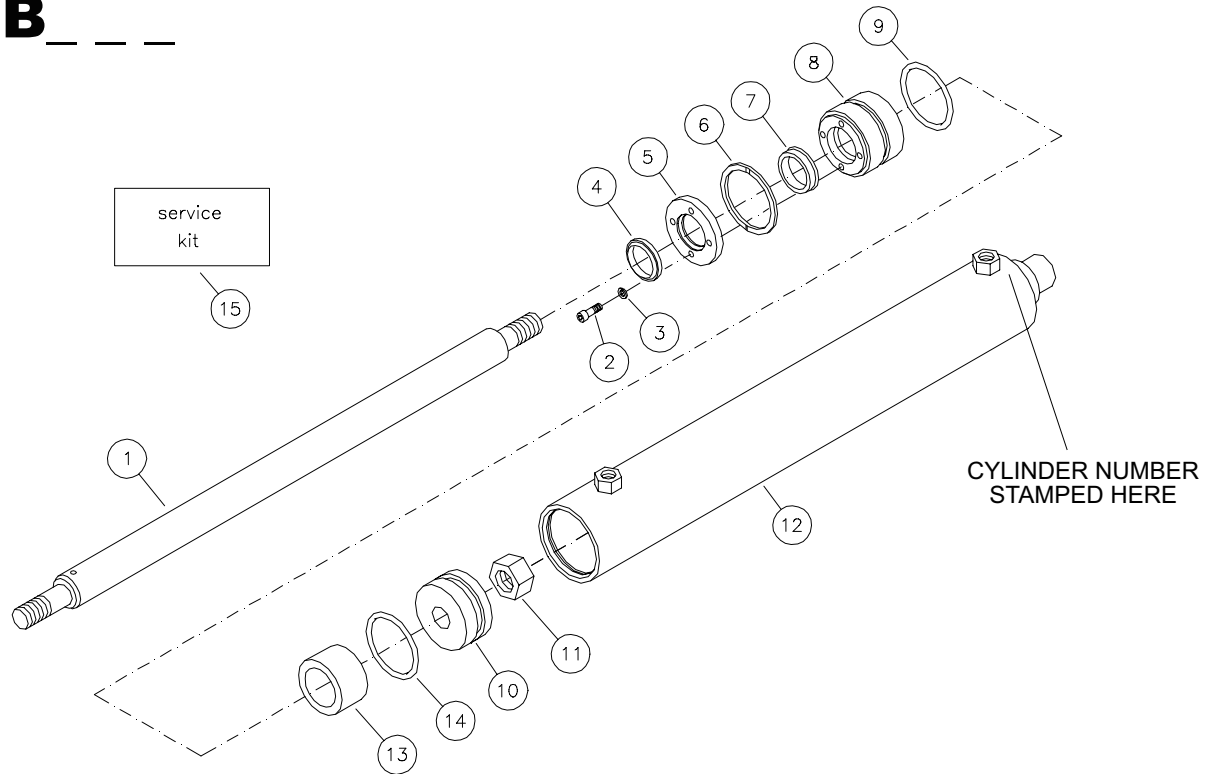


## CYLINDER

**C-1B** \_ \_ \_G90  
7

ITEM	REQ'D	PART #	DESCRIPTION
1.	1	104-002*	CYLINDER ROD
2.	4	403-034-002	SOCKET HEAD CAP SCREW
3.	4	402-016-008	LOCK WASHER
4.	1	124-007-002	ROD WIPER
5.	1	107-003-001	CYLINDER RETAINER
6.	1	410-017-001	RETAINING RING
7.	1	123-009-004	ROD SEAL
8.	1	106-003-001	CYLINDER HEAD
9.	1	121-024-008	O-RING
10.	1	105-002-001	CYLINDER PISTON
11.	1	406-023-001	NUT
12.	1	108-005*	TUBE ASSEMBLY
13.	1	050-001*	SPACER
14.	1	121-023-001	O-RING
15.	0	900-002-004	SERVICE KIT

**SERVICE KIT NUMBER 900-002-004**

1	124-007-002	ROD WIPER
1	123-009-004	ROD SEAL
1	121-023-001	O-RING
4	403-034-002	SOCKET HEAD CAP SCREW
4	402-016-008	LOCK WASHER
1	410-017-001	RETAINING RING
1	121-024-008	O-RING

\* Specify cylinder number, attachment model number, or attachment serial number when ordering.

- All seals are included in service kit. Seals are not sold individually.