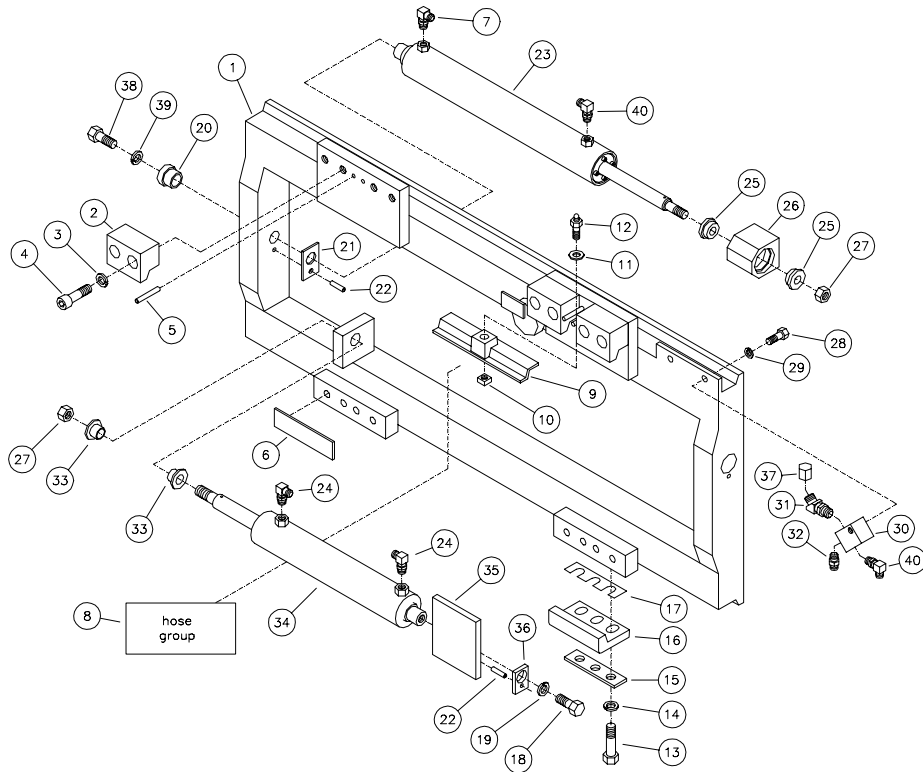


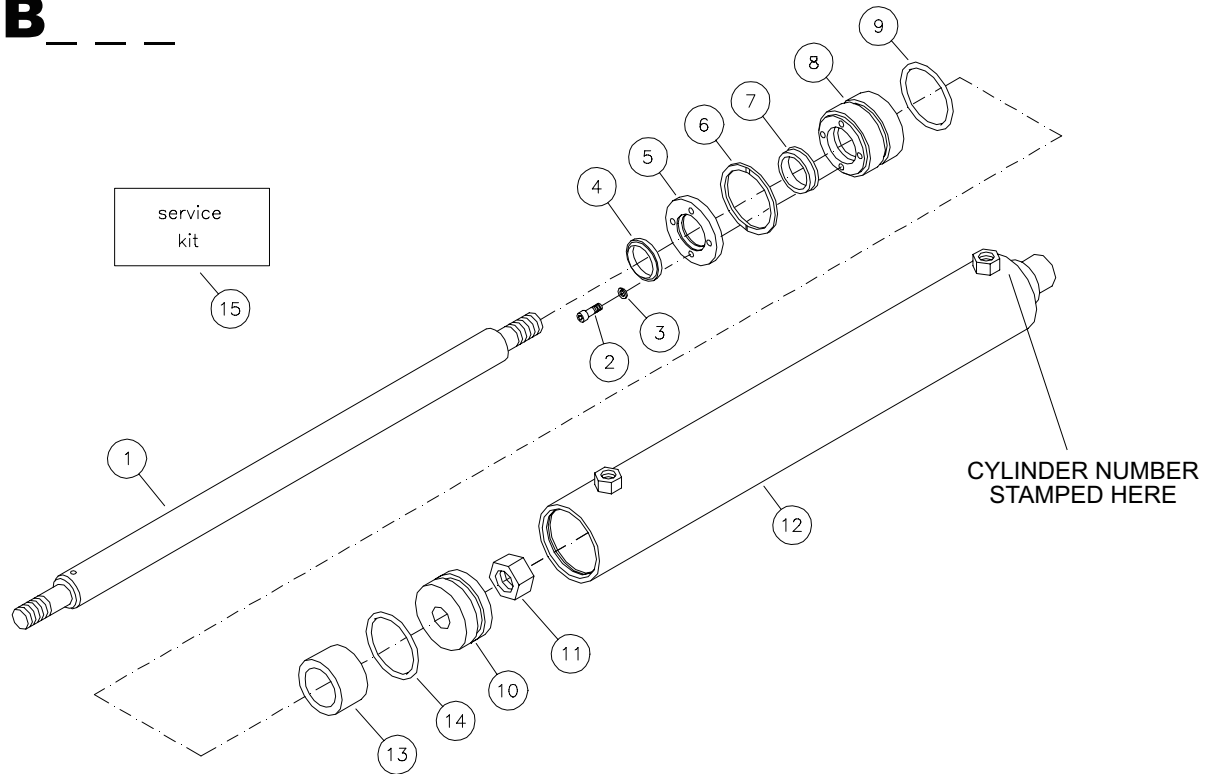
CLASS III SIDE SHIFTING FORK POSITIONER FOR MODELS BEGINNING E9D, E8D, E7D, E6D

G528
10

ITEM	REQ'D	PART #	DESCRIPTION	ITEM	REQ'D	PART #	DESCRIPTION
1.	1	204-033*	FORK POSITIONER	22.	3	401-016-001	ROLL PIN
2.	4	006-006	HOOK	23.	2	C-1B*	CYLINDER
3.	8	402-017-002	LOCK WASHER	24.	2	120-051-002	FITTING
4.	8	403-036-006	SOCKET HEAD SCREW CAP	25.	4	046-001	BUSHING
5.	4	401-016-002	ROLL PIN	26.	2	101-012	CYLINDER ANCHOR
6.	2	020-043-001	POLYETHELENE BEARING	27.	3	406-023-001	NUT
7.	2	120-070-001	FITTING	28.	2	405-072-001	CAP SCREW
8.	1	127-068*	HYDRAULIC HOSE GROUP	29.	2	402-016-004	LOCK WASHER
9.	2	005-303	ITA SLIDE/RETAINER	30.	2	119-005-001	MANIFOLD
10.	2	406-004-001	NUT	31.	2	120-064-001	FITTING
11.	2	404-002-001	FLAT WASHER	32.	2	120-050-004	FITTING
12.	2	408-001	GREASE FITTING	33.	2	046-044-001	BUSHING
13.	6	405-067-003	CAP SCREW	34.	1	C-526-001	CYLINDER
14.	6	402-016-003	LOCK WASHER	35.	1	101-169-001	CYLINDER ANCHOR
15.	2	004-216	PLATE	36.	1	004-007	PLATE
16.	2	005-302	ITA SLIDE/RETAINER	37.	2	120-059-001	FITTING
17.	6	041-001	SHIM	38.	2	405-068-005	CAP SCREW
18.	1	405-069-004	CAP SCREW	39.	2	402-016-001	LOCK WASHER
19.	1	402-016-002	LOCK WASHER	40.	4	120-051-003	FITTING
20.	2	046-045-001	BUSHING	41.	1	235-006-002	INSTRUCTION
21.	2	004-006	PLATE				

* Specify fork positioner model or serial number when ordering.

CYLINDER

C-1B _ _ _G90
7

ITEM	REQ'D	PART #	DESCRIPTION
1.	1	104-002*	CYLINDER ROD
2.	4	403-034-002	SOCKET HEAD CAP SCREW
3.	4	402-016-008	LOCK WASHER
4.	1	124-007-002	ROD WIPER
5.	1	107-003-001	CYLINDER RETAINER
6.	1	410-017-001	RETAINING RING
7.	1	123-009-004	ROD SEAL
8.	1	106-003-001	CYLINDER HEAD
9.	1	121-024-008	O-RING
10.	1	105-002-001	CYLINDER PISTON
11.	1	406-023-001	NUT
12.	1	108-005*	TUBE ASSEMBLY
13.	1	050-001*	SPACER
14.	1	121-023-001	O-RING
15.	0	900-002-004	SERVICE KIT

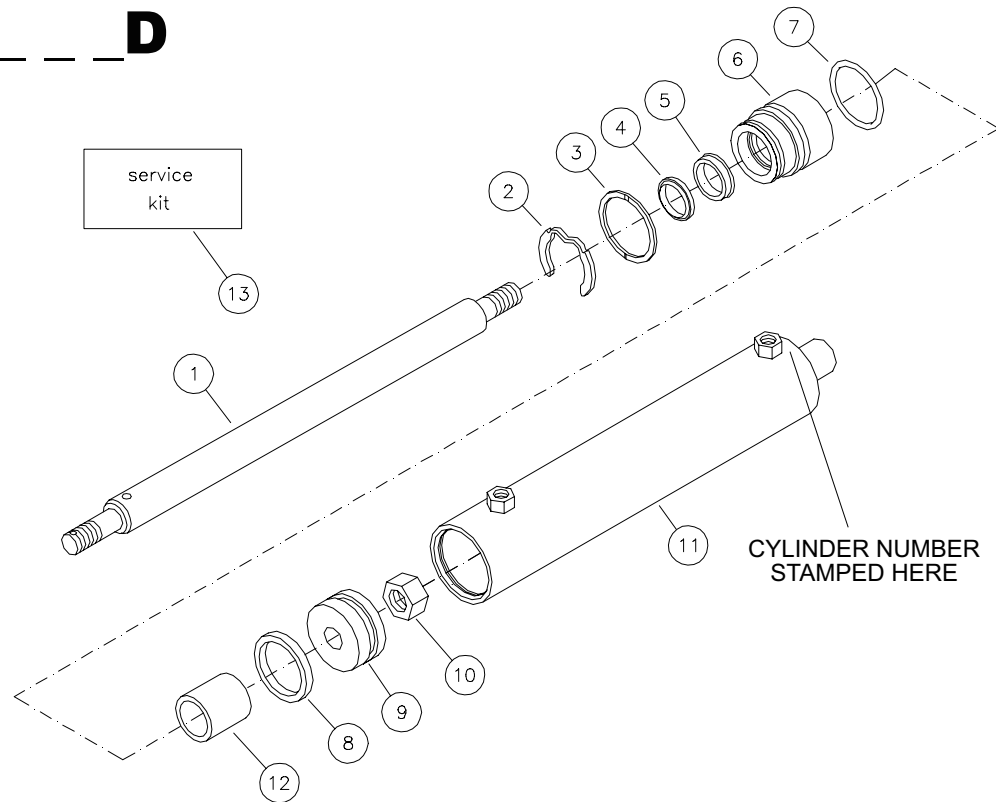
SERVICE KIT NUMBER 900-002-004

1	124-007-002	ROD WIPER
1	123-009-004	ROD SEAL
1	121-023-001	O-RING
4	403-034-002	SOCKET HEAD CAP SCREW
4	402-016-008	LOCK WASHER
1	410-017-001	RETAINING RING
1	121-024-008	O-RING

* Specify cylinder number, attachment model number, or attachment serial number when ordering.

- All seals are included in service kit. Seals are not sold individually.

CYLINDER C-1B _ _ _ D

G588
7

ITEM	REQ'D	PART #	DESCRIPTION
1.	1	104-002*	CYLINDER ROD
2.	1	410-022-001	RETAINING RING
3.	1	410-017-001	RETAINING RING
4.	1	124-007-002	ROD WIPER
5.	1	123-009-004	ROD/PISTON SEAL
6.	1	106-025-001	CYLINDER HEAD
7.	1	121-024-008	O-RING
8.	1	121-023-001	O-RING
9.	1	105-002-001	CYLINDER PISTON
10.	1	406-023-001	NUT
11.	1	108-005*	TUBE ASSEMBLY
12.	1	050-001*	SPACER/TUBE
13.	0	900-014-003	SERVICE KIT

SERVICE KIT NUMBER 900-014-003 INCLUDES

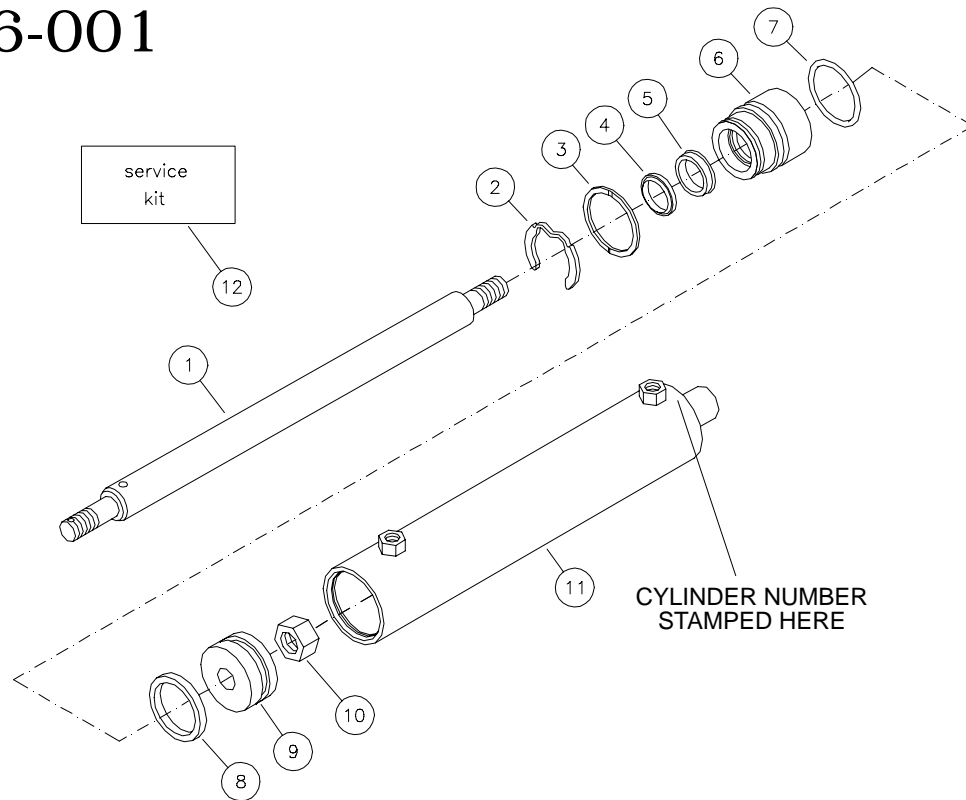
1	124-007-002	ROD WIPER
1	123-009-004	ROD/PISTON SEAL
1	121-024-008	O-RING
1	410-022-001	RETAINING RING
1	121-023-001	O-RING
1	410-017-001	RETAINING RING

* Specify cylinder number, attachment model number, or attachment serial number when ordering.

- All seals are included in service kit. Seals are not sold individually.

CYLINDER

C-526-001



ITEM	REQ'D	PART #	DESCRIPTION
1.	1	104-066-001	CYLINDER ROD
2.	1	410-022-002	RETAINING RING
3.	1	410-017-003	RETAINING RING
4.	1	124-007-003	ROD WIPER
5.	1	123-009-003	ROD/PISTON SEAL
6.	1	106-026-001	CYLINDER HEAD
7.	1	121-024-009	O-RING
8.	1	121-023-003	O-RING
9.	1	105-010	CYLINDER PISTON
10.	1	406-023-001	NUT
11.	1	108-072-001	TUBE ASSEMBLY
12.	0	900-010-002	SERVICE KIT

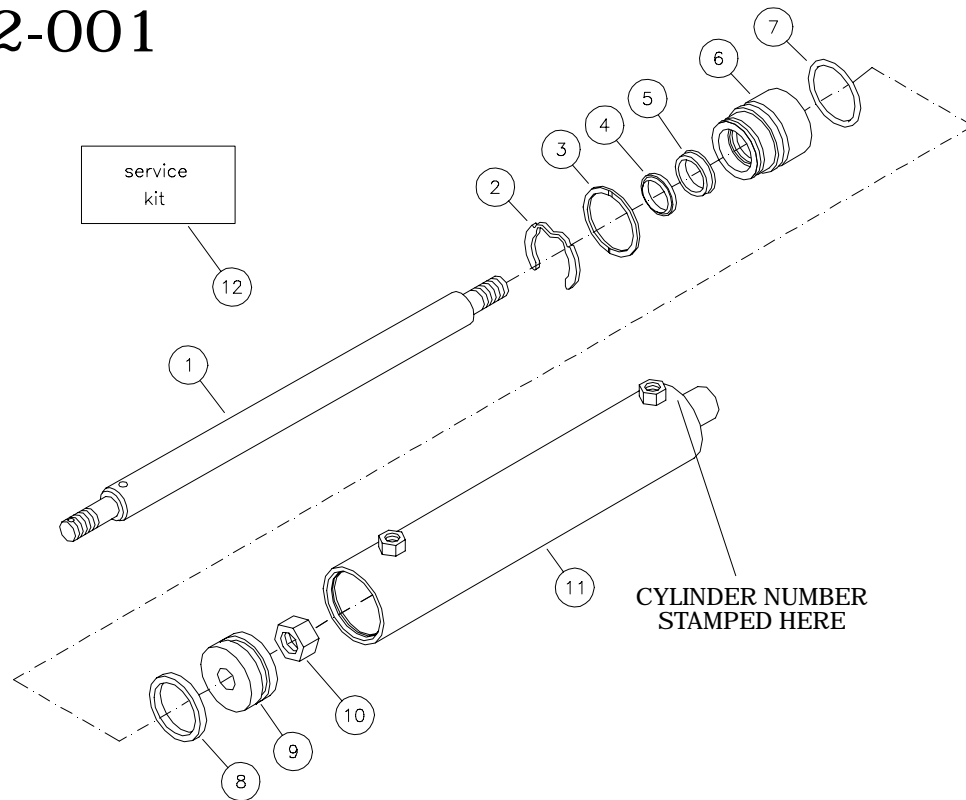
SERVICE KIT NUMBER 900-010-002 INCLUDES

1	124-007-003	ROD WIPER
1	121-024-009	ROD/PISTON SEAL
1	121-023-003	O-RING
1	410-022-002	RETAINING RING
1	121-023-003	O-RING
1	410-017-003	RETAINING RING

- All seals are included in service kit.
Seals are not sold individually.

CYLINDER

C-562-001



ITEM	REQ'D	PART #	DESCRIPTION
1.	1	104-066-005	CYLINDER ROD
2.	1	410-022-002	RETAINING RING
3.	1	410-017-003	RETAINING RING
4.	1	124-007-003	ROD WIPER
5.	1	123-009-003	ROD/PISTON SEAL
6.	1	106-026-001	CYLINDER HEAD
7.	1	121-024-009	O-RING
8.	1	121-023-003	O-RING
9.	1	105-010	CYLINDER PISTON
10.	1	406-023-001	NUT
11.	1	108-072-002	TUBE ASSEMBLY
12.	0	900-010-002	SERVICE KIT

SERVICE KIT NUMBER 900-010-002 INCLUDES

1	124-007-003	ROD WIPER
1	121-024-009	ROD/PISTON SEAL
1	121-023-003	O-RING
1	410-022-002	RETAINING RING
1	121-023-003	O-RING
1	410-017-003	RETAINING RING

- All seals are included in service kit.
Seals are not sold individually.

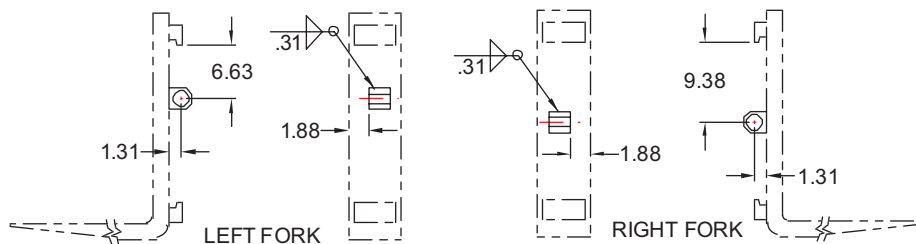
INSTALLATION INSTRUCTIONS FOR ITA CLASS III FORK POSITIONERS

These Instructions cover both side shifting and non-side shifting ITA class III D and E Series models. Fork installation information is included for units without factory supplied forks. Welding is required to install forks and to mount side shifting units.

Please read the instructions completely before you begin. Keep hands and feet free from dangerous positions or pinch points while working. Wear eye protection and appropriate clothing. Use the correct tools. Work in a clean, well lighted area taking care not to contaminate the hydraulic system as serious damage could result. Protect cylinder rods and other critical surfaces from weld spatter or accidental damage.

Installing the Forks *(Skip this procedure if your unit has factory installed forks.)*

1. Remove the fork anchors fastened to the fork positioning cylinder rods.
2. Weld one of the anchors to each fork shank as shown below. Make sure the anchor is level. Forks are made with various alloys. Contact the fork manufacturer for the recommended welding procedure.
3. Loosen the nut on each fork positioning cylinder base enough to push the cylinders back and allow the forks to be loaded through the center notch. Note: left and right are as viewed from the truck seat.



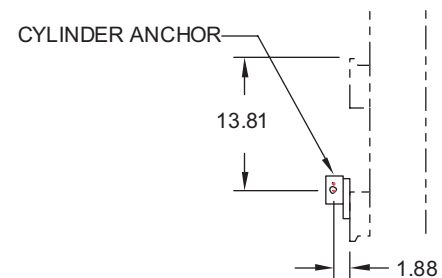
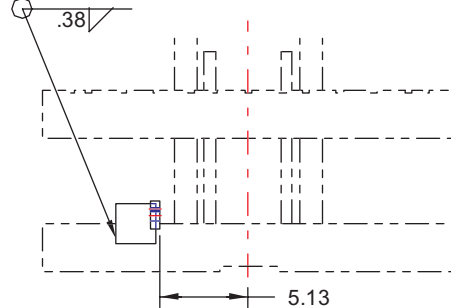
NOTE!

Front mounted backrests require the 1.88 dimension to be reduced by width of mounting flange. Forks may hit when fully retracted.

4. Insert the rod end of the fork positioning cylinder into the appropriate fork anchor, check for proper alignment then tighten the nuts on both ends of the cylinder.

Installing the Side Shift Cylinder Anchor *(Skip this procedure if your unit is non-side shifting.)*

1. Remove the side shift cylinder anchor from the side shift cylinder.
2. Carefully measure the truck carriage face as shown below and mark the cylinder anchor position.
3. Position the cylinder anchor as illustrated and tack weld. Insure that the anchor is perpendicular to the face of the truck carriage. Carriages are made with various alloys. Contact the truck manufacturer for the recommended welding procedure. Finish weld as indicated.



Mounting the Attachment

1. Remove the lower retainers.
2. Hang the Fork Positioner on the truck carriage, install the side shift cylinder and reinstall the retainers using shims as required.

If you have any questions or comments call (503)-556-1761 for technical assistance. Thank you for using Rightline products.